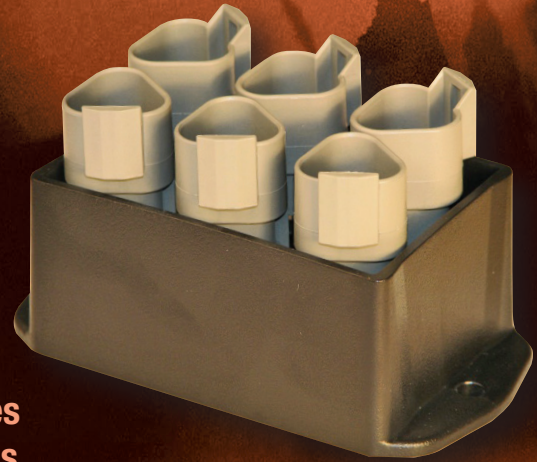


# J1939 Bus Splitter

This CAN bus splitter provides a cost effective and space efficient way of connecting multiple devices to the J1939 CAN bus. This module reduces cost by eliminating Y adapters and extra harnesses typically used to provide additional connections to the bus.



## Product Features

- Reduces bus harnesses
- Reduces bus connections
- Several standard configurations
- Small footprint
- Potted - true IP67 rating
- Easy 2 point mounting / rugged ABS housing
- Customizable

## Unit Connections

J1939 In connector: DT04-3P  
Mate connector: DT06-3S  
Mate contact: 0462-201-16141  
Mate wedge lock: W3S-1939

J1939 Out connector: DT04-3P  
Mate connector: DT06-3S  
Mate contact: 0462-201-16141  
Mate wedge lock: W3S-1939

Bus connections (4): DT04-3P  
Mate connector: DT06-3S  
Mate contact: 0462-201-16141  
Mate wedge lock: W3S

## Environmental Specifications

Storage temp.: -40° to 85°C

Operating temp.: -40° to 85°C

IP rating: 67

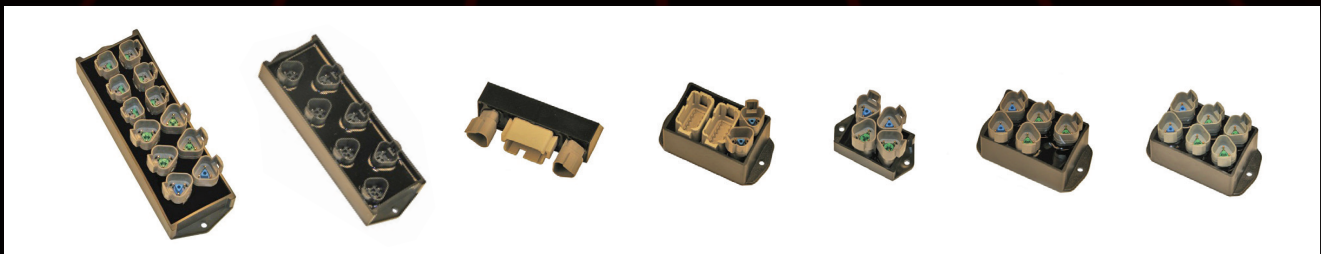
Weight: 0.40 lbs. Typ

Dimensions: 2.000" W

3.125" L

2.250" H

Mounting holes (2): 3.500" apart  
0.188" Dia.



**TROMBETTA**   
DC Power Solutions for a Harsh World